

Technical Support

If you need any technical help, please visit our official support site and contact our support team before returning the products: <https://support.camovue.com>.

Technischer Support

Wenn Sie technische Hilfe benötigen, besuchen Sie bitte unsere offizielle Support-Website und kontaktieren Sie unser Support-Team, bevor Sie die Produkte zurückschicken, <https://support.camovue.com>.

Support Technique

Si vous avez besoin d'une aide technique, veuillez consulter notre site d'assistance officiel et contactez notre équipe d'assistance avant de renvoyer les produits, <https://support.camovue.com>.

Supporto Tecnico

Se hai bisogno di assistenza tecnica, visita il nostro sito di supporto ufficiale e contatta il nostro team di supporto prima di restituire i prodotti, <https://support.camovue.com>.

Soporte técnico

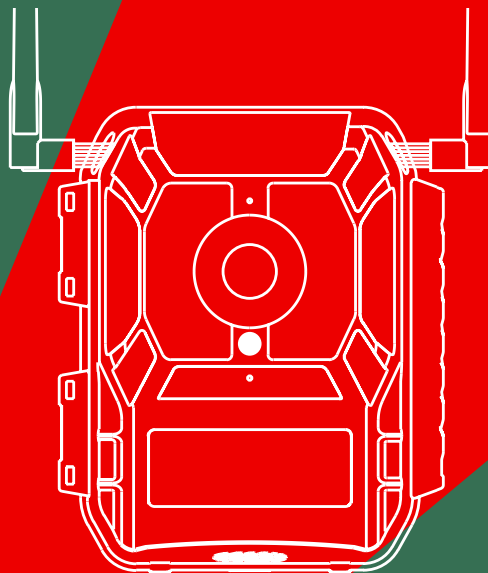
Si necesita ayuda técnica, visite nuestro sitio oficial de soporte y póngase en contacto con nuestro equipo de soporte antes de devolver los productos, <https://support.camovue.com>.

REOLINK INNOVATION LIMITED

FLAT/RM 705 7/F FA YUEN COMMERCIAL BUILDING 75-77 FA YUEN STREET MONG KOK KL HONG KONG

Operational Instructions

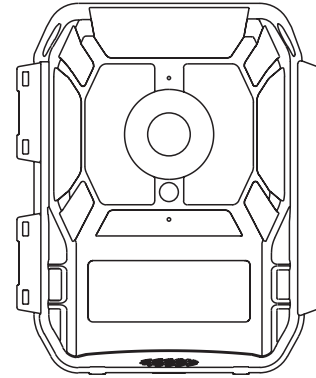
Apply to: Talon Pro



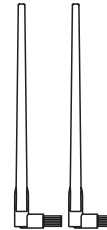
Contents

What's in the Box	2
Camera Introduction	3
Set up the Camera	5
Install the Camera	8
Select Your Preferred Work Mode	12
Troubleshooting	14
Specifications	15
Important Safety Instructions	15
Notification of Compliance	16

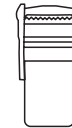
What's in the Box



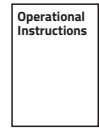
Camera*1



Antenna*2



Strap*1



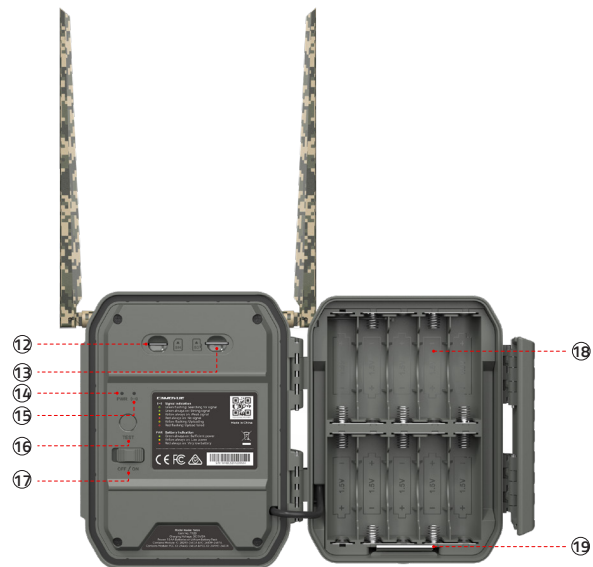
Operational
Instructions*1

NOTE: The actual contents of the package are subject to the particular bundle purchased.

Camera Introduction



The appearance of Talon Pro



- | | |
|-----------------------------------|----------------------------|
| ① Logo | ⑩ USB Type-C Port |
| ② Lens | ⑪ Back cover lock |
| ③ IR light | ⑫ Nano SIM card slot |
| ④ Temperature and humidity sensor | ⑬ microSD Card Slot |
| ⑤ PIR | ⑭ Power indicator |
| ⑥ Antenna | ⑮ Signal indicator |
| ⑦ MIC | ⑯ TEST & RESET button |
| ⑧ CDS & TEST indicator | ⑰ Power button |
| ⑨ Speaker hole | ⑱ Battery compartment |
| | ⑲ Battery compartment lock |

Reset to Factory Settings: Press and hold the Test & Reset Button for 5s.

Set up the Camera

Step 1: Download and log in to the Camovue App

Download the Camovue App, log in or register a Camovue account.

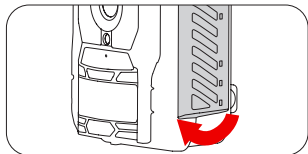
NOTE: Available on App Store & Google Play.



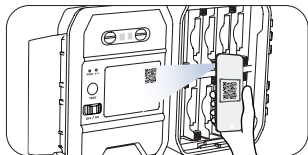
Step 2: Add and bind the camera on the Device page



Click the " + " button in the upper right corner.

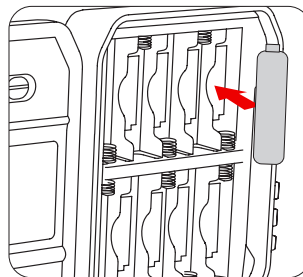


Open the casing.



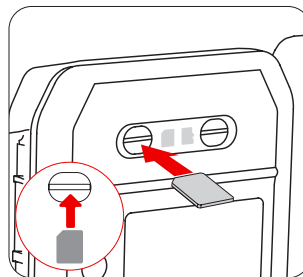
Scan the QR code on the device, and follow the instructions of the App to complete the camera activation and binding.

Step 3: Install batteries, SIM card and SD card



Please keep your camera open, install 10 AA alkaline batteries or a BP-10 rechargeable lithium battery pack to power the camera AA alkaline batteries and BP-10 rechargeable lithium battery packs are not provided).

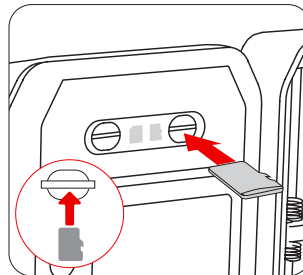
NOTE:
Use new batteries.
Do not mix new and old batteries.



Insert the SIM card.

NOTE:

- To obtain compatible SIM cards, please visit the Camovue official website.
- Please insert the Nano SIM card according to the diagram.



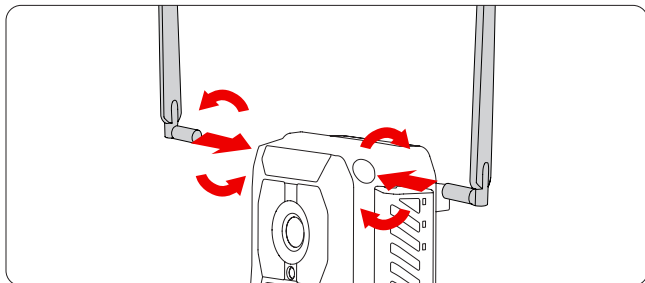
Insert the SD card (SD cards sold separately).

NOTE:

- We recommend you use an SD card with FAT32 format, Class 10 or above (Up to 256GB).
- Please insert the SD card as shown.

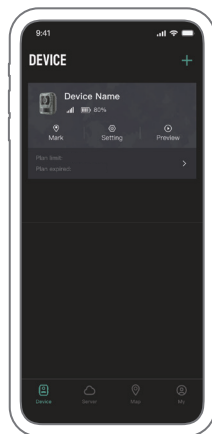
Step 4: Install the antenna

It is recommended to install the antenna upwards for a better signal reception experience.



Step 5: Complete Initial Setup

Follow the app instructions to finish the camera initial setup. Once finished, the camera will be added to your device list.

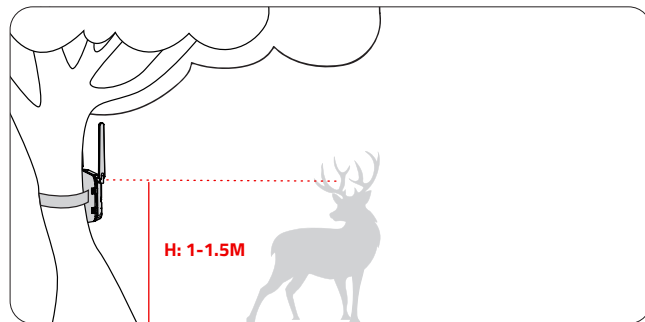
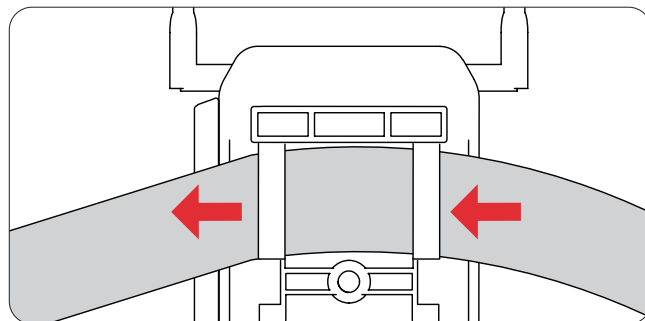


Install the Camera

Step 1: Install the camera

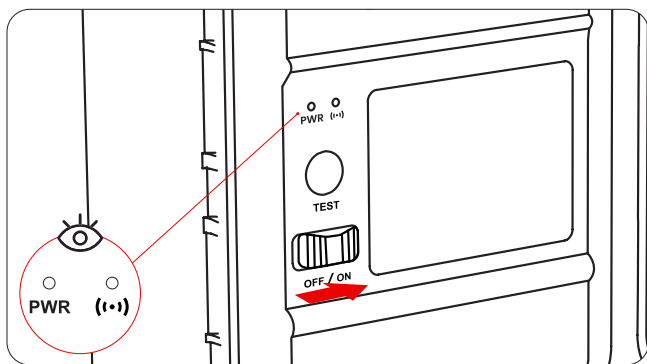
Put the strap through the mounting slot and strap the camera to a tree. The recommended height is 1-1.5m, which is basically the same height as the monitored animal.

NOTE: You can adjust the camera according to the height of the monitored target.
* It's recommended that there are no leaves, branches, or tall grass obstructing the camera's view, or light sources shining directly into the lens.



Step 2: Confirm the operating status

Turn on the power switch, observe the signal indicator and the power indicator to ensure that the device is connected to the network successfully and has sufficient power.



(i) Signal indicator: After powering on, it starts searching for signals, and then displays the signal status after searching has completed. It will turn off after 5 minutes.

- Flashing Green: Searching for signal
- Solid Green: Strong signal
- Solid Yellow: Weak signal
- Solid Red: No signal
- Flashing Yellow: Uploading
- Flashing Red: Upload failed

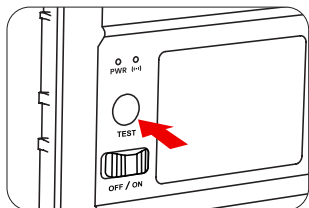
PWR Battery indicator: Indicates the power status after power on.

- Solid Green: Sufficient power
- Solid Yellow: Low power
- Solid Red: Very low power

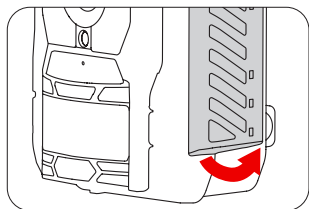
NOTE: If the camera has unusual voice prompts, please check the following solutions:

Voice Prompt	Camera Status	Solutions
"Network connection failed!"	Camera fails to connect to the server.	The camera will be in Standby mode and reconnect later.
"SIM card can not be recognized. Please insert the SIM card correctly, and restart the camera."	Camera cannot recognize this SIM card.	<ul style="list-style-type: none"> ▪ Check if the SIM card is facing the reverse direction. ▪ Check if the SIM card is not fully inserted and insert it again.
"Not registered on the network, please activate your SIM card and check the signal strength."	Camera fails to register to the operator network.	<ul style="list-style-type: none"> ▪ Check whether your card is activated or not. If not, please call your operator to activate the SIM card. ▪ The signal is weak at the current position. Please move the camera to a location with a better signal. ▪ Check if you are using the correct version of the camera.
"Data call failed. Please confirm your cellular data plan is available."	The SIM card has run out of data or APN settings are not correct.	<ul style="list-style-type: none"> ▪ Please check whether the data plan for the SIM card is still available. ▪ Import the correct APN settings to the camera.
"The device network has been reset, please delete the device on the app and add it again."	Camera's SIM card has been replaced with a new one.	Please delete the old device listed in the App.

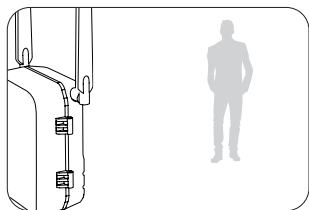
Step 3: Testing



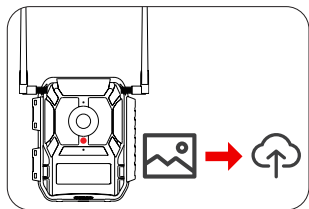
When the camera is powered on, short press the Test button, the camera will enter the 1-minute test mode. The test light will flash for a while, indicating the camera has entered the test mode successfully.



Close the casing.



Walk across the cameras' detection zone.

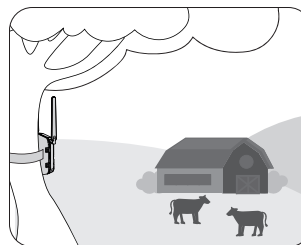


If the detection is successful, the camera's test light will turn red and the photos triggered by the detection will be uploaded to the cloud. You can view the captured pictures in the App to ensure the upload function is working properly.

Select Your Preferred Work Mode

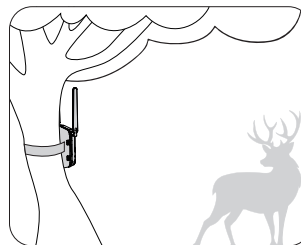
Power Efficiency Options

This camera supports two working modes: standard mode and power-saving mode.



Standard Mode

The default working mode of the camera. You can get instant access to the camera vision in real-time and receive instant alarm notifications, meeting your real-time monitoring needs.



Power-Saving Mode

The camera no longer supports real-time preview. Instead, it communicates with the server at scheduled times to upload captured events to the cloud. This greatly extends battery life, making it more suitable for hunting scenarios.

You can customize the communication frequency in power-saving mode:

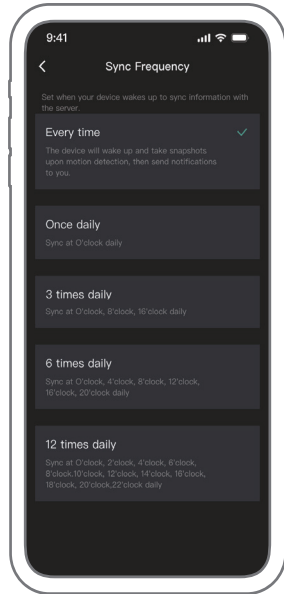
Every time: When the camera is triggered by an animal or other events, it will automatically capture and upload the recorded video and pictures to the cloud immediately. After completion, it will enter standby mode automatically.

Custom time: You can set the time for the camera to communicate. The camera can still be triggered by animals or other events and capture, but it will only upload the accumulated videos and pictures to the cloud at the set time. The camera will be in standby mode at other times.

NOTE: The lower the camera communication frequency, the more it helps to extend the battery life of the camera. You can disable the power saving mode during communication time.



Enable Power-Saving Mode



Adjust Sync Frequency

Troubleshooting

Camera is not Powering On

If your camera does not turn on, please use the following solutions:

- Make sure you have turned on the power.
- If you are using AA batteries, it is recommended to replace them with new ones. After the replacement, you can turn on the switch and check whether the power indicator lights up green.
- If you are using the BP-10 rechargeable lithium battery pack, you can charge the camera using a 5V/2A charger. When the power indicator turns green, the battery is fully charged.

If these steps do not work, please contact the Support team.

PIR Sensor Fails to Trigger Alarm

If the PIR sensor fails to trigger any kind of alarm within the covered area, try the following solutions:

- Make sure the camera's position is perpendicular to the expected movement of wildlife.
- Make sure the PIR sensor is enabled or the schedule is set up properly and running.
- Check the sensitivity settings and make sure it's set up properly.
- Make sure the battery is working.
- Reset the camera and try again.

If these won't work, please contact the Support team.

Unable to Receive Push Notifications

If you fail to receive any push notifications when motion is detected, try the following solutions:

- Make sure the push notification has been enabled.
- Make sure the PIR schedule is set up properly.
- Check the network connection on your phone and try again.
- If the signal indicator is solid red, it means the camera is disconnected from the Internet.
- Make sure you've enabled Allow Notifications on your phone. Go to the System Settings on your phone and allow CAMOVUE App to send push notifications.

If these won't work, please contact the Support team.

Specifications

PIR & IR

PIR Detection Distance: 20 m

PIR Detecting Angle: 90°

IR Distance: 20 m, Black IR

General

Operating Temperature: -20(-4°F) ~ 55 (131°F)

Weather Resistance: IP67

Size: 115*81*138 mm

Weight: 522 g

Important Safety Instructions

Please read the instructions carefully before using the camera:

- Replace only with the same or equivalent type of equipment and accessories recommended by the manufacturer. Using an incorrect type poses an explosion risk.
- Use it only in temperatures ranging from -20°C and 55°C .
- Do not use or store a battery camera near heat sources, such as space heaters, cooking surfaces, cooking appliances, irons, radiators, or fireplaces. Extreme heat may cause an explosion.
- Do not expose the camera with a battery to extremely low air pressure environments, as this may cause an explosion.
- Do not place the camera with a battery in hot wilderness areas or expose it to lightning, as this poses a risk of fire.
- Do not hit or heavily compress the camera with a battery, as this poses a risk of fire or explosion.
- Do not use the battery if it appears damaged, swollen, or compromised in any way (e.g., leaking, emitting odors, dented, corroded, rusted, cracked, swollen, melted, or scratched).
- Keep the camera and battery away from children.
- Do not ingest or swallow battery. If the battery is ingested or swallowed, it can cause severe internal burns and damage. Seek immediate medical attention if you suspect the battery has been ingested or placed inside any part of the body.

- Do not attempt to disassemble, repair, or alter the camera or battery by yourself.
- Keep the charging port dry, clean and free of any debris. Cover it with the rubber plug after the battery is fully charged.
- Always follow the local safety laws and regulations when using the camera.
- Always follow the local waste and recycling laws to dispose of used batteries.

Notification of Compliance

Legal Disclaimer

To the maximum extent permitted by applicable law, this document and the product described, with its hardware, software, firmware, and services, are delivered on an “as-is” and “as-available” basis, with all faults and without warranty of any kind. Camovue disclaims all warranties, express or implied, including but not limited to, warranties of merchantability, satisfactory quality, fitness for a particular purpose, accuracy, and non-infringement of third-party rights. In no event will Camovue, its directors, officers, employees, or agents be liable to you for any special, consequential, incidental or indirect damages, including but not limited to damages for loss of business profits, business interruption, or loss of data or documentation, in connection with the use of this product, even if Camovue has been advised of the possibility of such damages.

To the extent permitted by applicable law, your use of the Camovue products and services is at your sole risk and you assume all risks associated with internet access. Camovue does not take any responsibilities for abnormal operation, privacy leakage or other damages resulting from cyber attacks, hacker attacks, virus inspections, or other internet security risks. However, Camovue will provide timely technical support if required.

The laws and regulations related to this product vary by jurisdiction. Please check all relevant laws and regulations in your jurisdiction before using this product to ensure that your use conforms to the applicable law and regulation. During the use of the product, you must comply with relevant local laws and regulations. Camovue is not responsible for any illegal or improper use and its consequences. Camovue is not liable in the event that this product is used with illegitimate purposes, such as third-party rights infringement, medical treatment, safety equipment, or other situations where the product failure could lead to death or personal injury, or for weapons of mass destruction, chemical and biological weapons, nuclear explosion, and any unsafe nuclear energy uses or anti-humanity purposes. In the event of any conflicts between this manual and the applicable law, the latter prevails.

FCC Statement

This device complies with Part 15 of the FCC Rules. Operation is subject to the following two conditions:

- (1) This device may not cause harmful interference, and
- (2) This device must accept any interference received, including interference that may cause undesired operation. Changes or modifications not expressly approved by the party responsible for compliance could void the user's authority to operate the equipment.

This equipment has been tested and found to comply with the limits for a Class B digital device, pursuant to Part 15 of the FCC Rules. These limits are designed to provide reasonable protection against harmful interference in a residential installation. This equipment generates uses and can radiate radio frequency energy and, if not installed and used in accordance with the instructions, may cause harmful interference to radio communications. However, there is no guarantee that interference will not occur in a particular installation. If this equipment does cause harmful interference to radio or television reception, which can be determined by turning the equipment off and on, the user is encouraged to try to correct the interference by one or more of the following measures:

- Reorient or relocate the receiving antenna.
- Increase the separation between the equipment and receiver.
- Connect the equipment into an outlet on a circuit different from that to which the receiver is connected.
- Consult the dealer or an experienced radio/TV technician for help.

FCC RF warning statement

The device has been evaluated to meet general RF exposure requirement. The device can be used in portable exposure condition without restriction.

ISED Statement

This device complies with Industry Canada licence-exempt RSS standard(s). Operation is subject to the following two conditions:

- (1) this device may not cause interference, and
- (2) this device must accept any interference, including interference that may cause undesired operation of the device.

This equipment should be installed and operated with a minimum distance of 20 cm between the radiator and your body.

Le présent appareil est conforme aux CNR d'Industrie Canada applicables aux appareils radio exempts de licence. L'exploitation est autorisée aux deux conditions suivantes :

- (1) l'appareil ne doit pas produire de brouillage, et
 - (2) l'utilisateur de l'appareil doit accepter tout brouillage radioélectrique subi, même si le brouillage est susceptible d'en compromettre le fonctionnement.
- Cet équipement doit être installé et utilisé avec une distance minimale de 20 cm entre le radiateur et votre corps.

MODIFICATION: Any changes or modifications not expressly approved by the grantee of this device could void the user's authority to operate the device.

Toute modification non approuvée explicitement par le fournisseur de licence de l'appareil peut entraîner l'annulation du droit de l'utilisateur à utiliser l'appareil.

This Class B digital apparatus complies with Canadian ICES-003.

Cet appareil numérique de la classe B est conforme à la norme NMB-003 du Canada.

SIMPLIFIED EU AND UK DECLARATION OF CONFORMITY

Hereby, REOLINK INNOVATION LIMITED declares that the radio equipment type [refer to the cover of the Operational Instruction] is in compliance with Directive 2014/53/EU. The full text of the EU and UK declaration of conformity is available at the following internet address: <https://support.reolink.com/hc/en-us/articles/36788378727065/>

RF exposure information: The Maximum Permissible Exposure (MPE) level has been calculated based on a distance of 20cm between the device and the human body. To maintain compliance with RF exposure requirement, use product that maintain a 20cm distance between the device and human body



Correct Disposal of This Product

This marking indicates that this product should not be disposed with other household wastes throughout the EU. To prevent possible harm to the environment or human health from uncontrolled waste disposal, recycle it responsibly to promote the sustainable reuse of material resources. To return your used device, please use the return and collection systems or contact the retailer where the product was purchased. They can take this product for environmentally safe recycling.

Operating Frequency

▪ Europe

LTE-FDD:

Band 1: 1920~1980MHz ≤23 dBm(EIRP)

Band 3: 1710~1785MHz ≤23.5 dBm(EIRP)

Band 7: 250~2570MHz ≤23.5 dBm(EIRP)

Band 8: 880~915MHz ≤23.5 dBm(EIRP)

Band 20: 832~862MHz ≤23.5 dBm(EIRP)

Band 28A: 703~733MHz ≤23 dBm(EIRP)

WCDMA:

Band 1: 1920~1980MHz ≤23 dBm(EIRP)

Band 8: 880~915MHz ≤23 dBm(EIRP)

Limited Warranty

This product comes with a 2-year limited warranty that is valid only if purchased from Camovue Official Store or a Camovue authorized reseller.

Learn more: <https://camovue.com/warranty-and-return/>.

NOTE: We hope that you enjoy the new purchase. But if you are not satisfied with the product and plan to return, we strongly suggest that you delete the camera from your Camovue App, reset the camera to factory default settings, and take out the inserted SD card and SIM card before returning.

Terms and Privacy

Use of the product is subject to your agreement to the Terms of Service and Privacy Policy at camovue.com.

Terms of Service

By using the Product Software that is embedded on the Camovue product, you agree to the terms&conditions between you and Camovue. Learn more:

<https://camovue.com/terms-conditions/>.

Technical Support

If you need any technical help, please visit our official support site and contact our support team before returning the products,

<https://support.camovue.com>.