

Laifen Neo High-Speed Hair Dryer

User Manual

laifen

IMPORTANT SAFETY INSTRUCTIONS

When using electrical appliances, especially when children are present, basic safety precautions should always be followed, including the following:

READ ALL INSTRUCTIONS BEFORE USING KEEP AWAY FROM WATER

DANGER

As with most electrical appliances, electrical parts are electrically live even when the switch is off. To reduce the risk of death by electric shock:

1. Always unplug the appliance immediately after use.
2. Do not use while bathing.
3. Do not place or store the appliance where it can fall or be pulled into a tub or sink.
4. Do not place or drop the appliance into water or other liquid.
5. If the appliance falls into water, unplug it immediately. Do not reach into the water.

WARNING

The appliance, filter, and attachments contain magnets:

1. This appliance and some official accessories contain magnetic elements that should be kept away from devices and objects that could be affected or damaged by magnetic fields. This includes pacemakers, defibrillators, cards with a magnetic stripe, and electronic storage media.

WARNING

To reduce the risk of burns, electrocution, fire, or injury to persons:


1. This appliance should never be left unattended when plugged in.
2. Close supervision is necessary when this appliance is used by, on, or near children or individuals with certain disabilities.
3. Use this appliance only for its intended use as described in the User Manual. Do not use attachments not recommended by the manufacturer.
4. Never operate this appliance if it has a damaged cord or plug, if it is not working properly, or if it has been dropped, damaged, or dropped into water. Contact Customer Support at csteam@laifentech.com for examination and repair.
5. Keep the cord away from heated surfaces. Do not wrap the cord around the appliance.
6. Never block the air openings of the appliance or place it on a soft surface, such as a bed or couch, where the air

openings may be blocked. Keep the air openings free of lint, hair, and the like.

7. Never use while sleeping.
8. Never drop or insert any object into any opening.
9. Do not use outdoors or operate where aerosol (spray) products are being used or where oxygen is being administered.
10. Do not use an extension cord with this appliance.
11. Do not direct hot air toward eyes or other heat-sensitive areas.
12. Attachments may be hot during use. Allow them to cool before handling.
13. Do not place the appliance on any surface while it is operating.
14. While using the appliance, keep your hair away from the air inlets.
15. Do not operate with a voltage converter.
16. This appliance is not intended for use by persons (including children) with reduced physical, sensory, or mental capabilities, or lack of experience and knowledge, unless they have been given supervision or instruction concerning use of the appliance by a person responsible for their safety.
17. Children should be supervised to ensure that they do not play with the appliance.
18. When the appliance is used in a bathroom, unplug it after use since the proximity of water presents a hazard even when the appliance is switched off.
19. For additional protection, the installation of a residual current device (RCD) having a rated residual operating current not exceeding 30 mA is advisable in the electrical circuit supplying the bathroom. Ask your installer for advice.

READ AND SAVE THESE INSTRUCTIONS

SERVICING OF DOUBLE-INSULATED APPLIANCES

1. In a double-insulated appliance, two systems of insulation are provided instead of grounding.
2. No grounding means is provided on a double-insulated appliance, nor should a means for grounding be added to the appliance. Servicing a double-insulated appliance requires extreme care and knowledge of the system, and should be done only by qualified service personnel.
3. Replacement parts for a double-insulated appliance must be identical to the parts they replace.
4. A double-insulated appliance is marked with the words "DOUBLE INSULATION" or "DOUBLE INSULATED." The symbol (square within a square) is a standard IEC symbol for double insulation. It consists of a larger square with a smaller square centered inside it.
5. **WARNING:** Do not use this appliance near bathtubs, showers, basins, or other vessels containing water.
6. If the supply cord is damaged, it must be replaced by the manufacturer, its service agent or similarly qualified persons in order to avoid a hazard.



ALCI Safety (U.S. and Canada Only)

1. This appliance has a polarized plug (one blade is wider than the other). As a safety feature, this plug will fit in a polarized outlet only one way. If the plug does not fit fully in the outlet, reverse the plug. If it still does not fit, contact a qualified electrician. Do not attempt to defeat this safety feature, and do not change the plug in any way.
2. This appliance is equipped with a protective device (ALCI - Appliance Leakage Circuit Interrupter) that may make it inoperable under some abnormal conditions (such as immersion of the appliance). If the appliance becomes inoperable, contact Customer Support at csteam@laifentech.com for examination and repair.
3. The appliance has a reset and test button built into the plug, which should be operated each time the appliance is plugged in and used.

To test: press the test button. The reset button will pop out, indicating that the appliance is safe to use.

To reset: unplug the appliance and press the reset button. Plug in again to use your appliance.

4. Note - If the ALCI trips while in use, the appliance should be unplugged. Press the reset button and reinsert the plug into the outlet. If the ALCI immediately trips for a second time, unplug the appliance and contact Customer Support at csteam@laifentech.com.

Appliance Maintenance

1. Regularly remove deposits from the air inlet using a dry towel, cotton swab, or toothbrush. When cleaning the air inlet, ensure that the power is turned off and the power cord is unplugged.
2. Avoid pressing or rubbing the air inlet and outlet with your fingernails or sharp objects to prevent damage to the appliance.
3. Do not use alcohol, nail polish remover, or detergents to clean this appliance, as they may cause malfunctions, cracks, or fading.
4. Do not attempt to repair, disassemble, or modify the appliance yourself. If a repair is required, consult the User Manual or contact Customer Support at csteam@laifentech.com.
5. If the cord of the appliance is twisted, untwist it before use.
6. If any part of the appliance shows signs of malfunctioning or damage, immediately discontinue use and consult the User Manual or contact Customer Support at csteam@laifentech.com.

Disposal and Recycling Information

Correct Disposal of This Product (Waste Electrical & Electronic Equipment) (Applicable in Countries with Separate Collection Systems)



This marking shown on the product or its literature, indicates that it should not be disposed with other household wastes at the end of its working life.

To prevent possible harm to the environment or human health from uncontrolled waste disposal, please separate this from other types of wastes and recycle it responsibly to promote the sustainable reuse of material resources.

Household users should contact either the retailer where they purchased this product, or their local government office, for details of where and how they can take this item for environmentally safe recycling. Business users should contact their supplier and check the terms and conditions of the purchase contract. This product should not be mixed with other commercial wastes for disposal.

Product Features

High-Speed Brushless Motor

Laifen's independently developed 108,000 RPM high-speed brushless motor can generate powerful airflows to quickly dry hair.

Smart Temperature Control

This appliance has a built-in temperature control system that precisely regulates the air temperature to prevent overheating and hair damage.

Temperature Cycling Mode

Automatically alternates between cold and hot airflows every 2 seconds. This prevents concentrated heat and protects hair from heat damage.

Negative Ion Generator

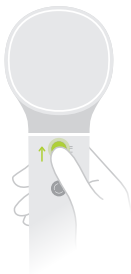
The built-in negative ion generator produces negative ions that neutralize the positive charges in the hair, reducing static buildup and preventing hair from becoming frizzy.

Noise Reduction Design

Through motor optimizations, high-frequency noises are modulated to frequencies imperceptible to the human ear. Additional noise reduction techniques, such as dynamic motor balance processing and sound-absorbing materials, further reduce noise, resulting in an even better user experience.



Function Descriptions



Power and Airspeed Settings

Toggle up or down to switch between airspeed settings.



Off



Low Speed



High Speed



● Press once to activate:



Cold Air



Warm Air



Hot Air

● ● Press 2 times to activate: — Long press to activate:



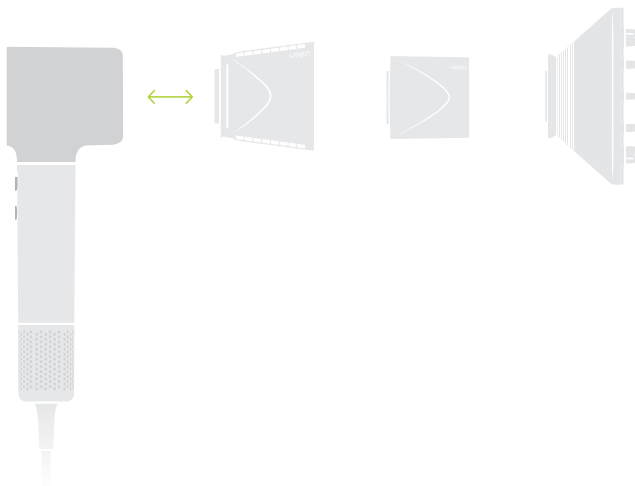
Child Mode*



Temperature
Cycling Mode

Nozzle Usage

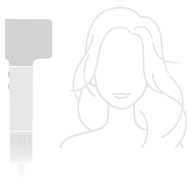
Connect the magnetic nozzle if necessary for styling.



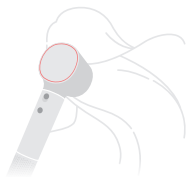
Drying Instructions



Pat your hair dry with a towel to remove excess moisture.



Maintain an appropriate distance between the appliance and your hair.

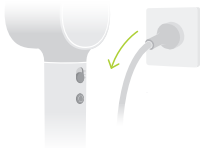


Start drying from the roots and gradually move towards the ends of the hair to ensure even heating and airflow distribution.



You can use your hands or a comb to assist in drying or styling your hair.

Cleaning and Maintenance



Before cleaning the filter, please ensure that the appliance is off and the power cord has been unplugged.

* The filter needs regular cleaning and maintenance to prevent blockage and ensure smooth airflow.

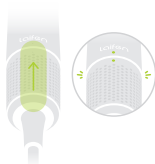


The intake filter is attached using magnets. Grasp the handle and pull the intake filter down to detach it from the handle.



Use a dry lint-free cloth, soft brush, toothbrush, or similar tool to remove any residue from the intake filter and the surface of the stainless steel filter.

* Do not use water to clean the intake filter, as it may cause malfunctions.



After cleaning, align the air intake filter with the handle slot by aligning the 2 circular symbols as shown. When you hear a "click" sound, it means that the magnet is firmly connected and the installation is complete.

Common Faults & Troubleshooting

Malfunction	Possible Cause	Solution
Appliance doesn't turn on; the 3-Color LED ring doesn't turn on	Power not properly connected	1. Check if the power is properly connected. 2. Check the circuit breaker, ensure the reset button is in the normal pressed state. 3.If the issue persists, contact support (see below).
Motor doesn't start; blinking blue light	Overheating protection activated	1. Power off, shut down, and wait 5-10 minutes before restarting. 2.If the issue still cannot be resolved, contact support (see below).
Motor doesn't start; blinking yellow light	Protection mode activated due to internal component issues	1. Power off, shut down, and wait 5-10 minutes before restarting. 2.If the issue still cannot be resolved, contact support (see below).
Motor doesn't start; blinking red light	Inlet or outlet blocked	1. Please clean the intake filter and exhaust vent, ensuring there are no blockages, then restart. 2.If the issue still cannot be resolved, contact support (see below).
3-Color LED ring not working, but the motor starts normally	Faulty 3-Color LED ring circuit board	Contact support for assistance (see below).
Starts normally, but airtread and temperature cannot be changed	Controls are damaged	Contact support for assistance (see below).
Heating element turns red	Main control board malfunction or inlet/outlet blockage	1. Please clean the intake filter and exhaust vent, ensuring there are no blockages, then restart. 2.If the issue still cannot be resolved, contact support (see below).
Power cord or plug overheating	Damaged power cord or loose plug	1. Try using a different outlet, ensuring the plug is correctly connected. 2. If any abnormalities are found, please contact support (see below).
Burnt smell during use	Internal components damaged	Contact support for assistance (see below).
Insufficient heat in hot air mode	Inlet blocked	1. Please clean the intake filter and exhaust vent, ensuring there are no blockages, then restart. 2.If the issue still cannot be resolved, contact support (see below).

Laifen Customer Support: csteam@laifentech.com

Return Policy

Return Service

The return period may vary depending on the regulations of the region and store where the sales order is placed. Please refer to the order purchase page or relevant store information for the specific return period. If you have any questions, please contact Customer Support at csteam@laifentech.com

To be eligible for a refund, you must:

- Return the appliance with all included accessories and gifts.
- Return them in their original packaging.
- Provide a valid proof of purchase.
- Ensure the appliance and accessories are resalable.

Return shipping costs:

- Returns caused by appliance quality issues will have shipping costs covered by Laifen.
- Returns for any reason other than appliance quality are the responsibility of the customer and all costs associated with returning the appliance, including shipping costs, will be handled by the customer.

Warranty & Support

Laifen 2-year limited guarantee*

Laifen offers a 2-year limited warranty on the hair dryers. Within two years from the date of purchase, if your appliance fails to function properly due to material or workmanship defects, we will provide repair or replacement services. Please note that depending on the availability of stock, the replacement may come in a different color or be an equivalent model. Warranty is only valid in the country or region of purchase.

Laifen's Limited Warranty does not override your statutory rights under local consumer laws. Coverage may differ based on regional legal requirements.

What is not covered under warranty:

- Purchases from unauthorized resellers.
- Appliances with an expired warranty.
- Appliances without a valid proof of purchase.
- Appliances that have been modified, altered or repaired through unofficial channels.
- Appliances that were used for any purpose other than drying hair.
- Appliances used for professional or commercial purposes or exceeding 'normal household operation' (more than two hours per day).
- Damage caused by operations that are not in accordance with the User Manual.
- Damage caused by any misuse or accident.
- Damage caused by excessive usage that is not normal wear and tear.

Get Professional Assistance from Laifen

If you have any further inquiries regarding our warranty policy or product usage, please feel free to contact us via email at csteam@laifentech.com. We greatly appreciate your feedback and look forward to assisting you.

For more information on product usage,
visit the official Laifen website: www.laifentech.com

Manufacturer: Shenzhen Shuye Technology Co., Ltd.
Address: Room 1301, Building T7, Qianwan 1st Road No. 399, Qianhai Kerry Business Center,
Nanshan, Shenzhen, Guangdong, China.